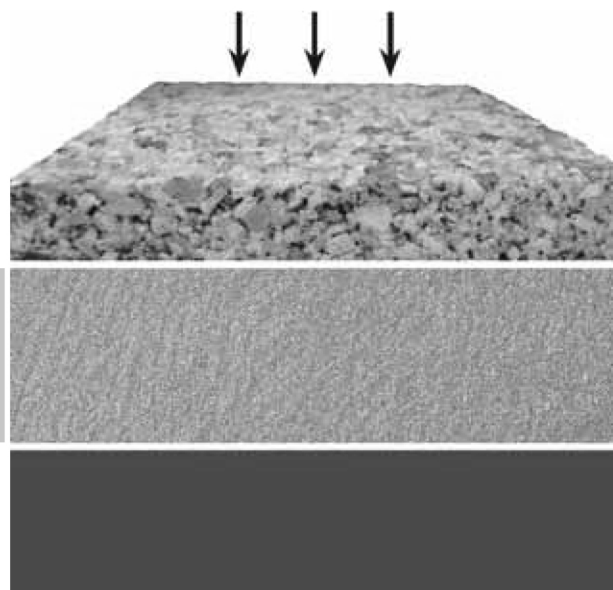


# Pedestrian Footbridge

Typical base build up for concrete base

0.5mm dia grit cast onto uncured surface



**Surface Course**

Hand applied and trowelled to a smooth finish by Chameleon Ways certified applicators

**Addabound resin bound paving depth requirements**

- 3mm mix requires a minimum depth of 1/2 inch
- 6mm mix requires a minimum depth of 5/8 inch
- 10mm mix requires a minimum depth of 7/8 inch

**Concrete Deck**

Designed to enigineer's specification to a minimun fall of 1.5%

**Sub-structure**

Designed to engineer's specification

*Newly laid bituminous surfaces are able to be treated 30 days or longer after installation to be sure all volatiles have dissipated from the surface. Newly placed concrete surfaces are able to be treated upon complete cure of concrete approximately 30-90 days after placement. If areas need to be installed sooner please consult with your approved Addabound installer.*



NOTE: A suitable steel, wood, brick, stone or aluminium edging should be provided to ensure a neat edge detail.

Any advice, recommendation or information given by Chameleon Ways, Inc is based on practical experience and is believed to be accurate at the time of publication, no liability or responsibility of any kind (including liability for negligence) is accepted in this respect by the company, its employees, or applicators.

It is recommended that a certified professional engineer design and develop the proper base structure requirements to support the expected loads and taking into account the climate and site specific conditions which may exist.

# Driveways

Typical base build up for cars and light trucks.

0.5mm dia grit cast onto uncured surface



**Surface Course**

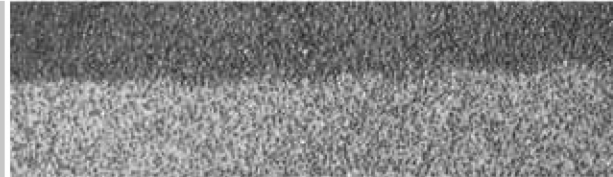
Hand applied and trowelled to a smooth finish by Chameleon Ways certified applicators.

**Addabound resin bound paving depth requirements**

3mm mix requires a minimum depth of 1/2 inch  
 6mm mix requires a minimum depth of 5/8 inch  
 10mm mix requires a minimum depth of 7/8 inch

**Binder/Sealing Course**

Laid by others in well compacted layers to a minimum fall of 1.5%



2 1/2 inch depth of 12.5mm dense graded bituminous binder/sealing course installed in compliance with DOT specifications

**Sub-base**

Laid by others in well compacted layers to a minimum fall of 1.5%



6 - 9 inch depth of well compacted non-frost susceptible sub base material installed in compliance with DOT specifications

(optional) geotextile membrane to prevent upward migration of fine particles

**Sub-grade**



*Newly laid bituminous surfaces are able to be treated 30 days or longer after installation to be sure all volatiles have dissipated from the surface. Newly placed concrete surfaces are able to be treated upon complete cure of concrete approximately 30-90 days after placement. If areas need to be installed sooner please consult with your approved Addabound installer.*



NOTE: A suitable steel, wood, brick, stone or aluminium edging should be provided to ensure a neat edge detail.

Any advice, recommendation or information given by Chameleon Ways, Inc is based on practical experience and is believed to be accurate at the time of publication, no liability or responsibility of any kind (including liability for negligence) is accepted in this respect by the company, its employees, or applicators.

It is recommended that a certified professional engineer design and develop the proper base structure requirements to support the expected loads and taking into account the climate and site specific conditions which may exist.



# Parking Lots

Typical base build up for cars and occasional delivery vehicles

0.5mm dia grit cast onto uncured surface



**Surface Course**

Hand applied and trowelled to a smooth finish by Chameleon Ways certified applicators

**Addabound resin bound paving depth requirements**

3mm mix requires a minimum depth of 5/8 inch  
6mm mix requires a minimum depth of 3/4 inch  
10mm mix requires a minimum depth of 1 inch

**Sealing Course**

Laid by others in well compacted layer to a minimum fall of 1.5%



1 1/2 inch depth of 9.5mm sealing course installed in compliance with current DOT specifications

**Binder Course**

Laid by others in well compacted layer to a minimum fall of 1.5%



3 inch depth of 25mm dense graded bituminous base course installed in compliance with DOT specifications

**Sub-base**

Laid by others in well compacted layer to a minimum fall of 1.5%



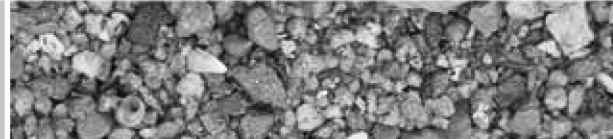
8 – 12 inch depth of well compacted non-frost susceptible sub base material installed in compliance with DOT specifications.

**Capping Layer - (if required)**



← (Optional) geotextile membrane to prevent upward migration of fine particles

**Sub-grade**



*Newly laid bituminous surfaces are able to be treated 30 days or longer after installation to be sure all volatiles have dissipated from the surface. Newly placed concrete surfaces are able to be treated upon complete cure of concrete approximately 30-90 days after placement. If areas need to be installed sooner please consult with your approved Addabound installer.*



**NOTE:** A suitable steel, wood, brick, stone or aluminium edging should be provided to ensure a neat edge detail.

Any advice, recommendation or information given by Chameleon Ways, Inc is based on practical experience and is believed to be accurate at the time of publication, no liability or responsibility of any kind (including liability for negligence) is accepted in this respect by the company, its employees, or applicators.

It is recommended that a certified professional engineer design and develop the proper base structure requirements to support the expected loads and taking into account the climate and site specific conditions which may exist.

# Rural Pathways

Typical base build up for pedestrian use

0.5mm dia grit cast onto uncured surface



**Surface Course**

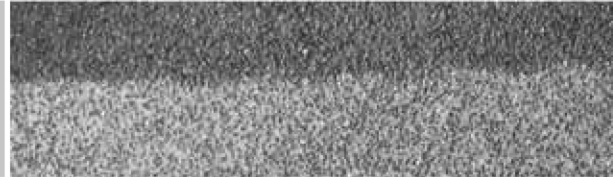
Hand applied and trowelled to a smooth finish by Chameleon Ways certified applicators

**Addabound resin bound paving depth requirements**

3mm mix requires a minimum depth of 1/2 inch  
6mm mix requires a minimum depth of 5/8 inch  
10mm mix requires a minimum depth of 7/8 inch

**Binder/Sealing Course**

Laid by others in well compacted layers to a minimum fall of 1.5%



2 inch depth of 12.5mm binder/sealing course installed in compliance with current DOT specifications

**Sub-base**

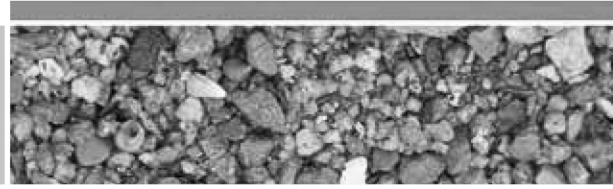
Laid by others in well compacted layers to a minimum fall of 1.5%



4 inch depth of well compacted non-frost susceptible sub base material installed in compliance with DOT specifications

(optional) geotextile membrane to prevent upward migration of fine soil particles

**Sub-grade**



*Newly laid bituminous surfaces are able to be treated 30 days or longer after installation to be sure all volatiles have dissipated from the surface. Newly placed concrete surfaces are able to be treated upon complete cure of concrete approximately 30-90 days after placement.*

*If areas need to be installed sooner please consult with your approved Addabound installer.*



**NOTE:** A suitable steel, wood, brick, stone or aluminium edging should be provided to ensure a neat edge detail.

Any advice, recommendation or information given by Chameleon Ways, Inc is based on practical experience and is believed to be accurate at the time of publication, no liability or responsibility of any kind (including liability for negligence) is accepted in this respect by the company, its employees, or applicators.

It is recommended that a certified professional engineer design and develop the proper base structure requirements to support the expected loads and taking into account the climate and site specific conditions which may exist.

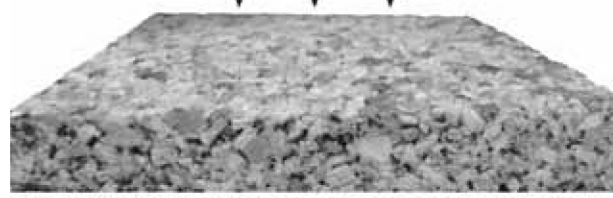


# Permeable Driveways

Sustainable Urban Drainage System

Typical base build up for cars and light trucks

0.5mm dia grit cast onto uncured surface



**Surface Course**  
Hand applied and trowelled to a smooth finish by Chameleon Ways certified applicators.

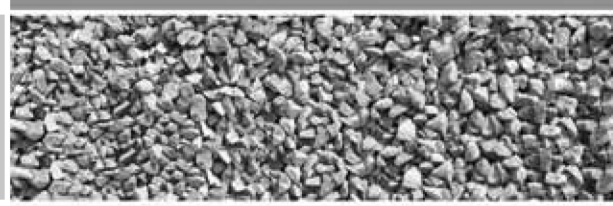
**Addabound resin bound paving depth requirements**  
6mm mix requires a minimum depth of 3/4 inch  
10mm mix requires a minimum depth of 1 inch

**Binder Course**  
Laid by others in well compacted layer



Depth of open graded bituminous base course must be designed to carry intended load.

**Sub-base**  
Laid by others in well compacted layer



← (optional) geotextile membrane to prevent downward migration of fine particles

6 - 8 inch well compacted, large, single size, crushed stone which meets DOT specifications for a porous application

(Optional) impermeable membrane →

**Capping Layer** – (if required)



← (optional) geotextile membrane to prevent upward migration of fine particles

**Sub-grade**



*Sub-grade, sub-base and binder courses must be designed by an engineer as depth and type of materials will change depending on intending load.*



**NOTE:** A suitable steel, wood, brick, stone or aluminium edging should be provided to ensure a neat edge detail.

Any advice, recommendation or information given by Chameleon Ways, Inc is based on practical experience and is believed to be accurate at the time of publication, no liability or responsibility of any kind (including liability for negligence) is accepted in this respect by the company, its employees, or applicators.

It is recommended that a certified professional engineer design and develop the proper base structure requirements to support the expected loads and taking into account the climate and site specific conditions which may exist.



# Permeable Pathways Sustainable Urban Drainage System

Typical base build up for pedestrian use

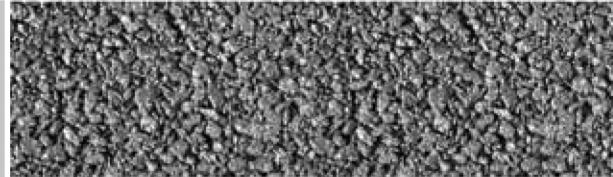
0.5mm dia grit cast onto uncured surface



**Surface Course**  
Hand applied and trowelled to a smooth finish by Chameleon Ways certified applicators

**Addabound resin bound paving depth requirements**  
6mm mix requires a minimum depth of 5/8 inch  
10mm mix requires a minimum depth of 7/8 inch

**Binder Course**  
Laid by others in well compacted layer



2 inch open-graded porous bituminous base course which meets DOT specifications for a porous application

**Sub-base**  
Laid by others in well compacted layer



4 inch well compacted, large, single size, crushed stone which meets DOT specifications for a porous application

(Optional) impermeable membrane



(optional) geotextile membrane to prevent downward migration of fine particles

(optional) geotextile membrane to prevent upward migration of fine particles

**Sub-grade**



*Newly laid bituminous surfaces are able to be treated 30 days or longer after installation to be sure all volatiles have dissipated from the surface. Newly placed concrete surfaces are able to be treated upon complete cure of concrete approximately 30-90 days after placement. If areas need to be installed sooner please consult with your approved Addabound installer.*



**NOTE:** A suitable steel, wood, brick, stone or aluminium edging should be provided to ensure a neat edge detail.

Any advice, recommendation or information given by Chameleon Ways, Inc is based on practical experience and is believed to be accurate at the time of publication, no liability or responsibility of any kind (including liability for negligence) is accepted in this respect by the company, its employees, or applicators.

It is recommended that a certified professional engineer design and develop the proper base structure requirements to support the expected loads and taking into account the climate and site specific conditions which may exist.

# Urban Pathways

Typical base build up for pedestrian and occasional maintenance vehicles

0.5mm dia grit cast onto uncured surface



## Surface Course

Hand applied and trowelled to a smooth finish by Chameleon Ways certified applicators

## Addabound resin bound paving depth requirements

3mm mix requires a minimum depth of 5/8 inch  
6mm mix requires a minimum depth of 3/4 inch  
10mm mix requires a minimum depth of 1 inch

## Binder/Sealing Course

Laid by others in well compacted layers to a minimum fall of 1.5%



2 inch depth of 12.5mm binder/sealing course installed in compliance with current DOT specifications

## Sub-base

Laid by others in well compacted layers to a minimum fall of 1.5%



6 inch depth of well compacted non-frost susceptible sub base material installed in compliance with DOT specifications

(optional) geotextile membrane to prevent upward migration of fine soil particles

## Capping Layer – (if required)



## Sub-grade



*Newly laid bituminous surfaces are able to be treated 30 days or longer after installation to be sure all volatiles have dissipated from the surface. Newly placed concrete surfaces are able to be treated upon complete cure of concrete approximately 30-90 days after placement. If areas need to be installed sooner please consult with your approved Addabound installer.*



NOTE: A suitable steel, wood, brick, stone or aluminium edging should be provided to ensure a neat edge detail.

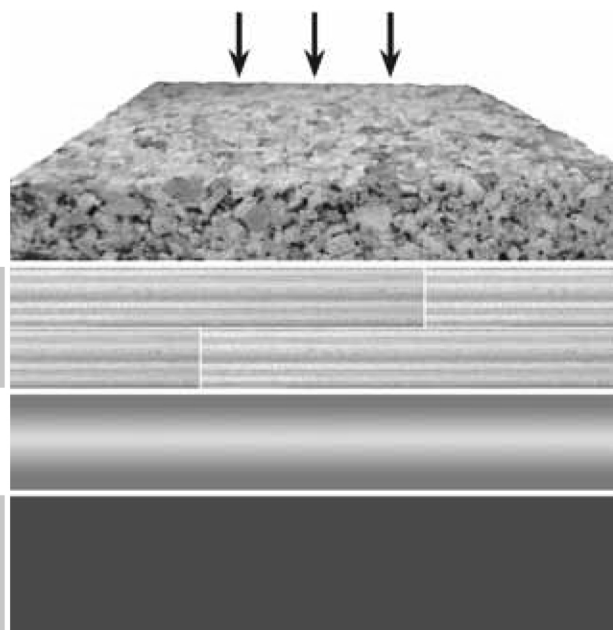
Any advice, recommendation or information given by Chameleon Ways, Inc is based on practical experience and is believed to be accurate at the time of publication, no liability or responsibility of any kind (including liability for negligence) is accepted in this respect by the company, its employees, or applicators.

It is recommended that a certified professional engineer design and develop the proper base structure requirements to support the expected loads and taking into account the climate and site specific conditions which may exist.

# Pedestrian Footbridge

Typical base build up for plywood base

0.5mm dia grit cast onto uncured surface



**Surface Course**  
 Hand applied and trowelled to a smooth finish by Chameleon Ways certified applicators

**Marine plywood**  
 2 layers of 3/4 inch thick marine ply with staggered overlapping joints (min 6 inches)

**Structural Metal Tray**  
 Designed to engineer's specification

**Sub-structure**  
 Designed to enigneer's specification

**Addabound resin bound paving depth requirements**  
 3mm mix requires a minimum depth of 1/2 inch  
 6mm mix requires a minimum depth of 5/8 inch  
 10mm mix requires a minimum depth of 7/8 inch

*Newly laid bituminous surfaces are able to be treated 30 days or longer after installation to be sure all volatiles have dissipated from the surface. Newly placed concrete surfaces are able to be treated upon complete cure of concrete approximately 30-90 days after placement. If areas need to be installed sooner please consult with your approved Addabound installer.*



**NOTE:** A suitable steel, wood, brick, stone or aluminium edging should be provided to ensure a neat edge detail.

Any advice, recommendation or information given by Chameleon Ways, Inc is based on practical experience and is believed to be accurate at the time of publication, no liability or responsibility of any kind (including liability for negligence) is accepted in this respect by the company, its employees, or applicators.

It is recommended that a certified professional engineer design and develop the proper base structure requirements to support the expected loads and taking into account the climate and site specific conditions which may exist.